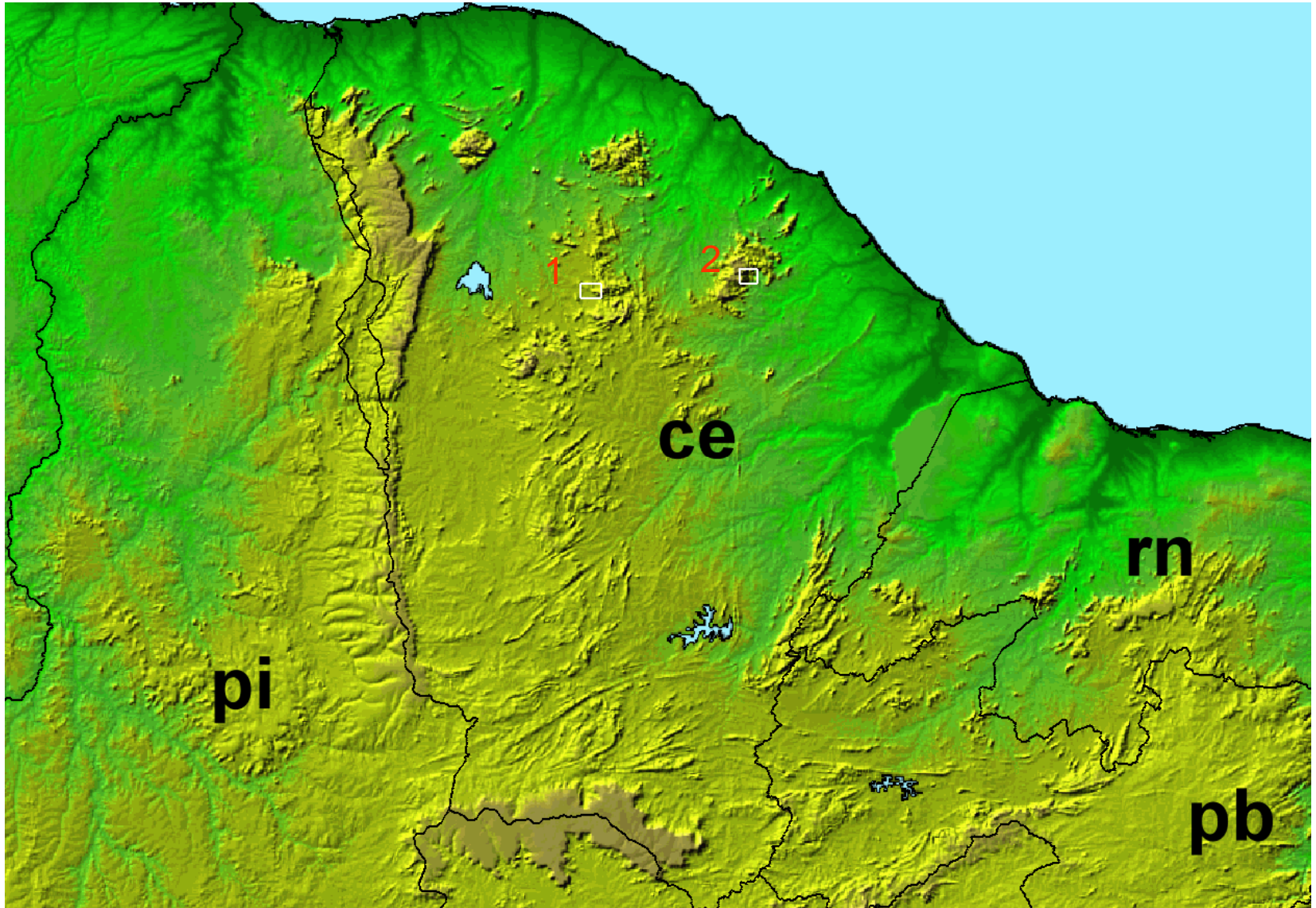
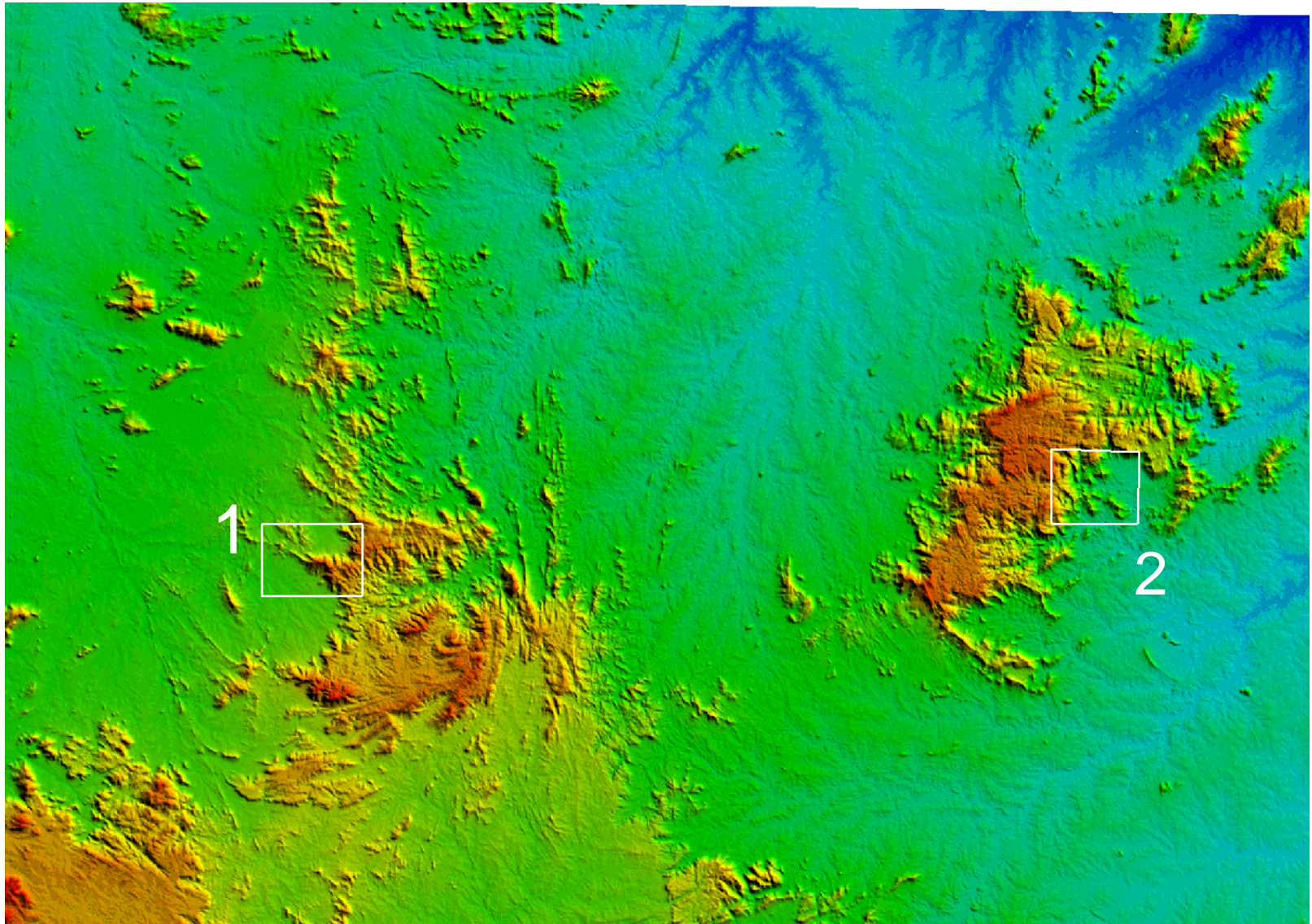


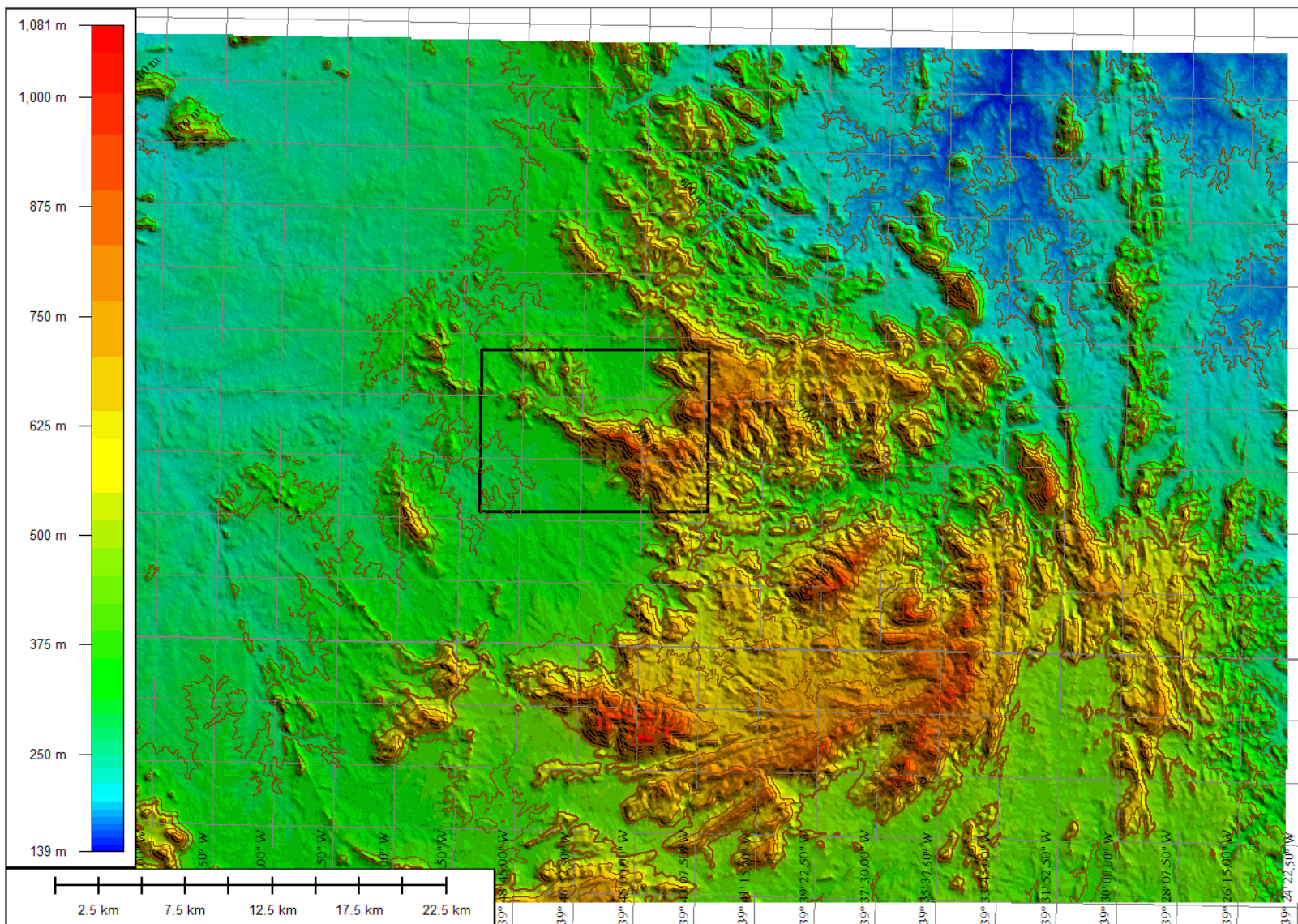
1- *Serra do Machado* 2 – *Serra do Baturité*



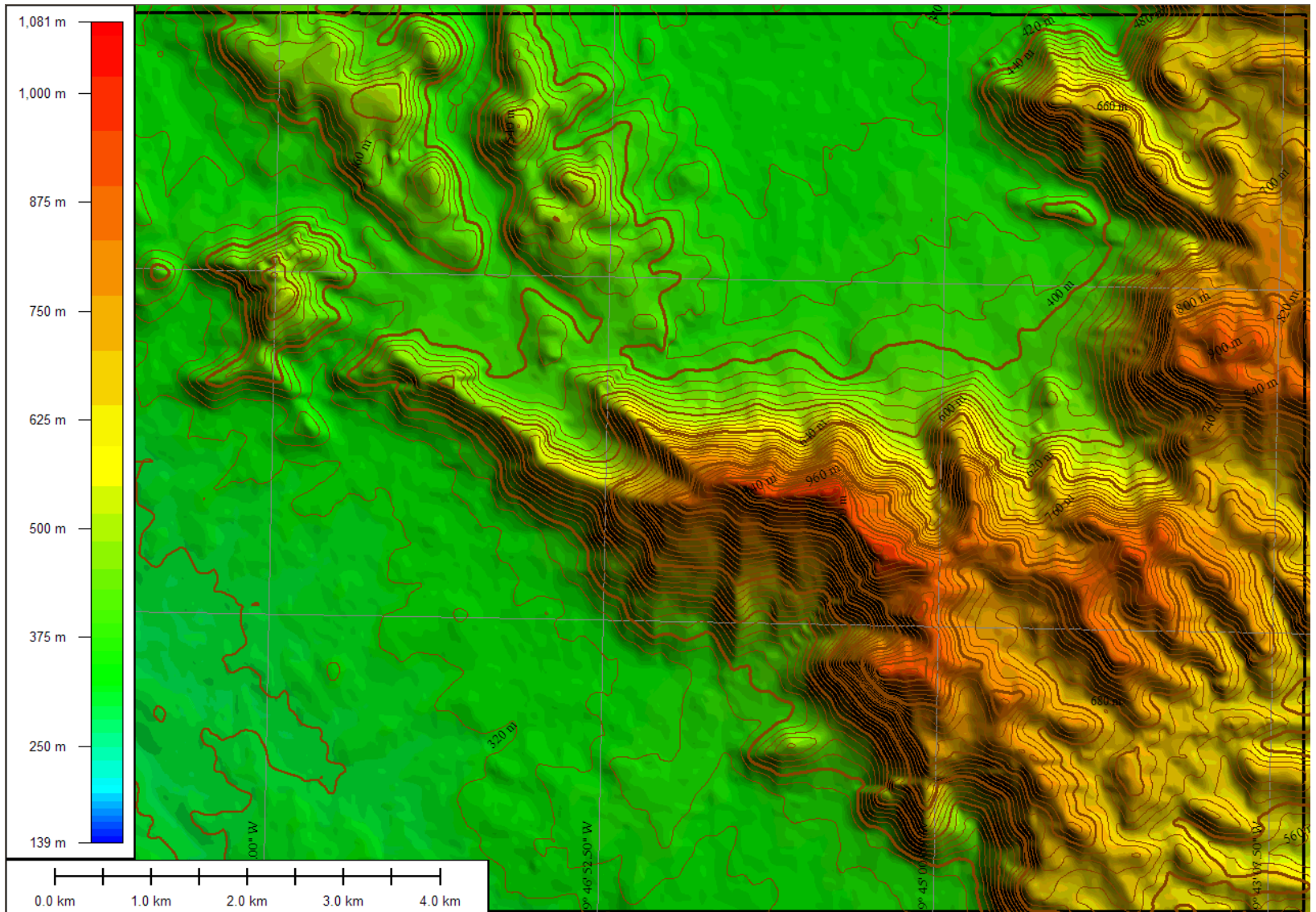
1- *Serra do Machado* 2 – *Serra do Baturité*



Serra do Machado – Município de Santa Quitéria-CE



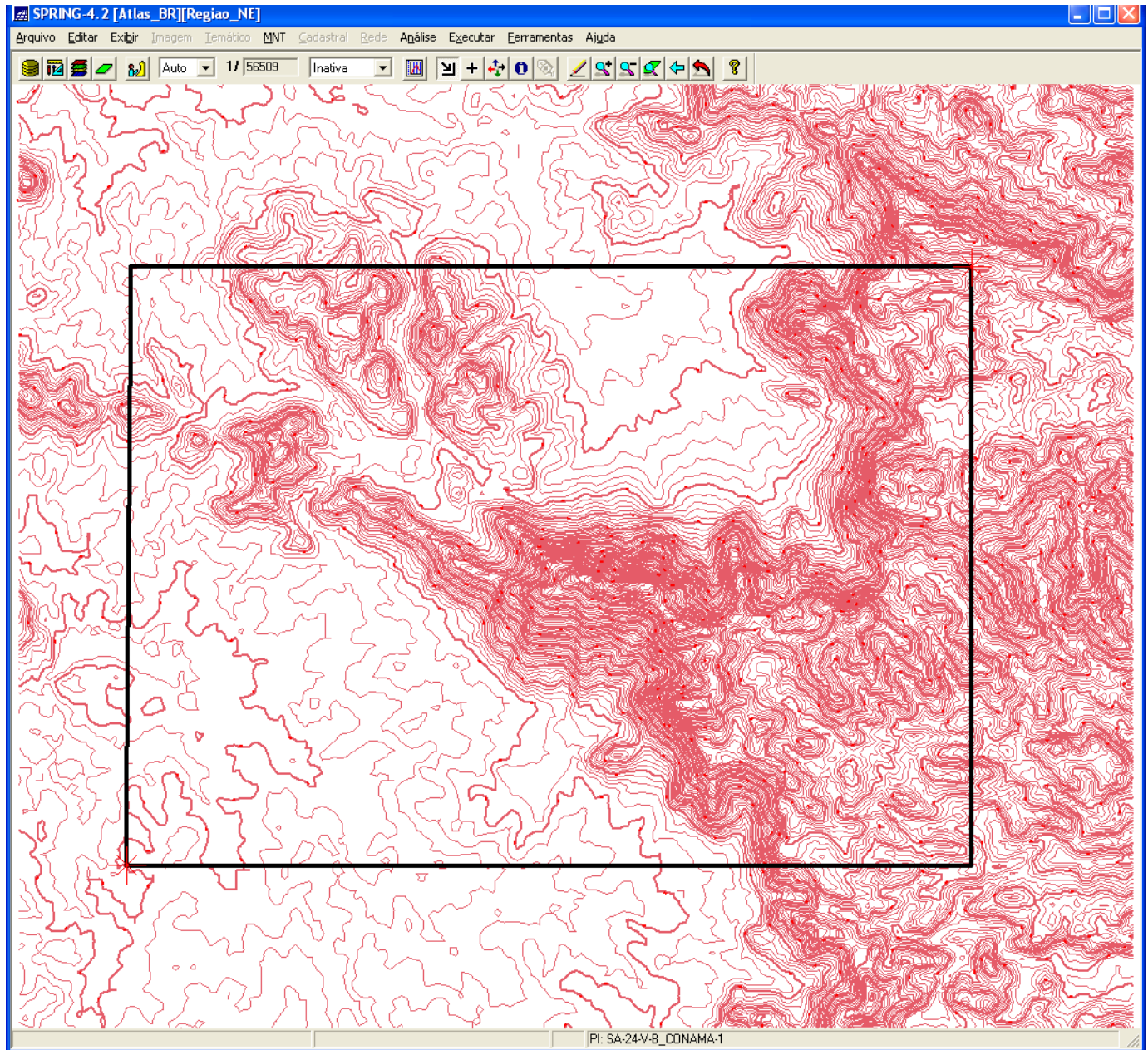
Área Teste 1 – Serra do Machado



Altimetria
fornecida
pelo
CONAMA

cn 10/10m

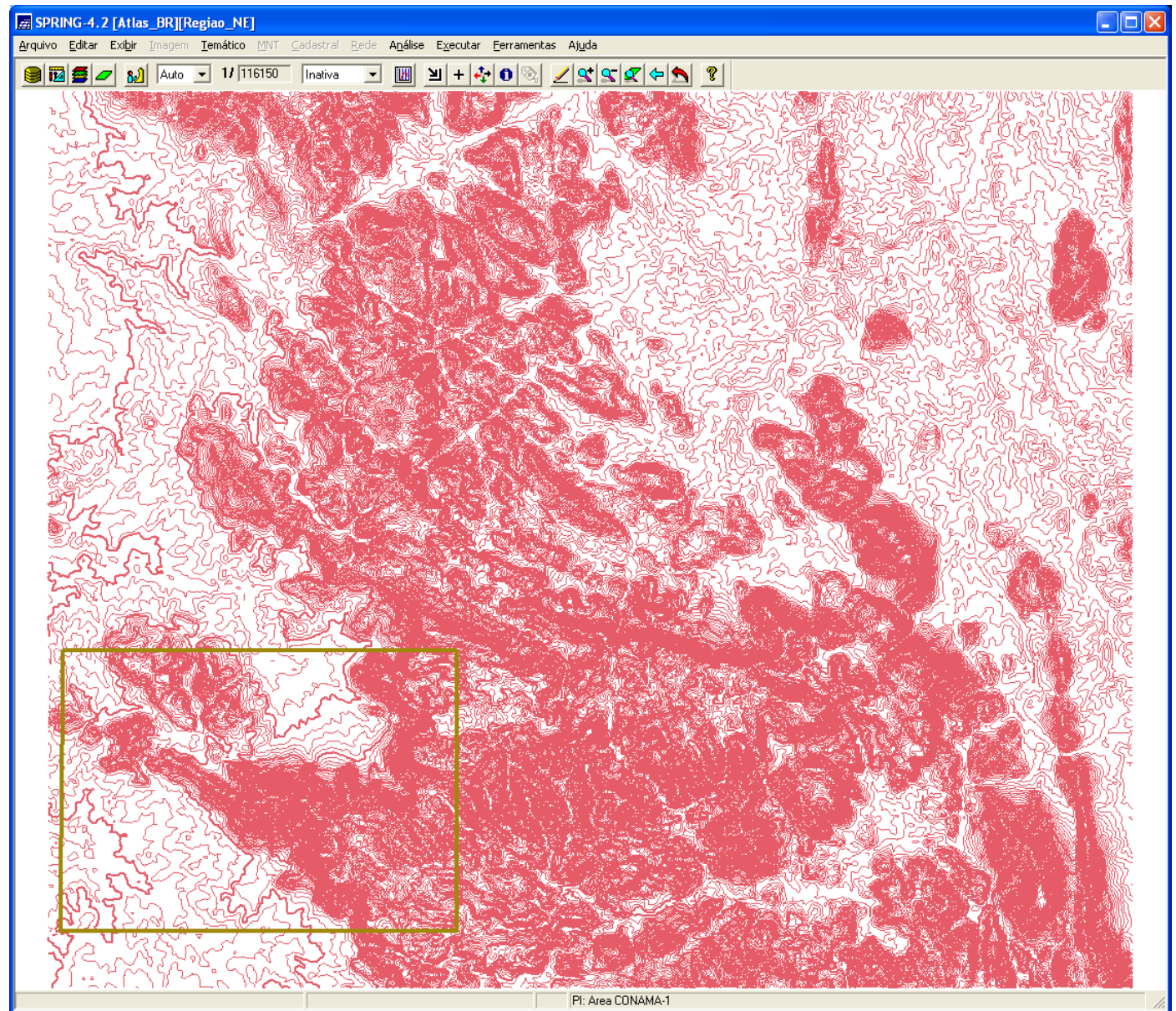
e box
definido para
exercício 1



Altimetria
fornecida pelo
CONAMA

e box
definido para
exercício 1

Contexto de
inserção da
área escolhida

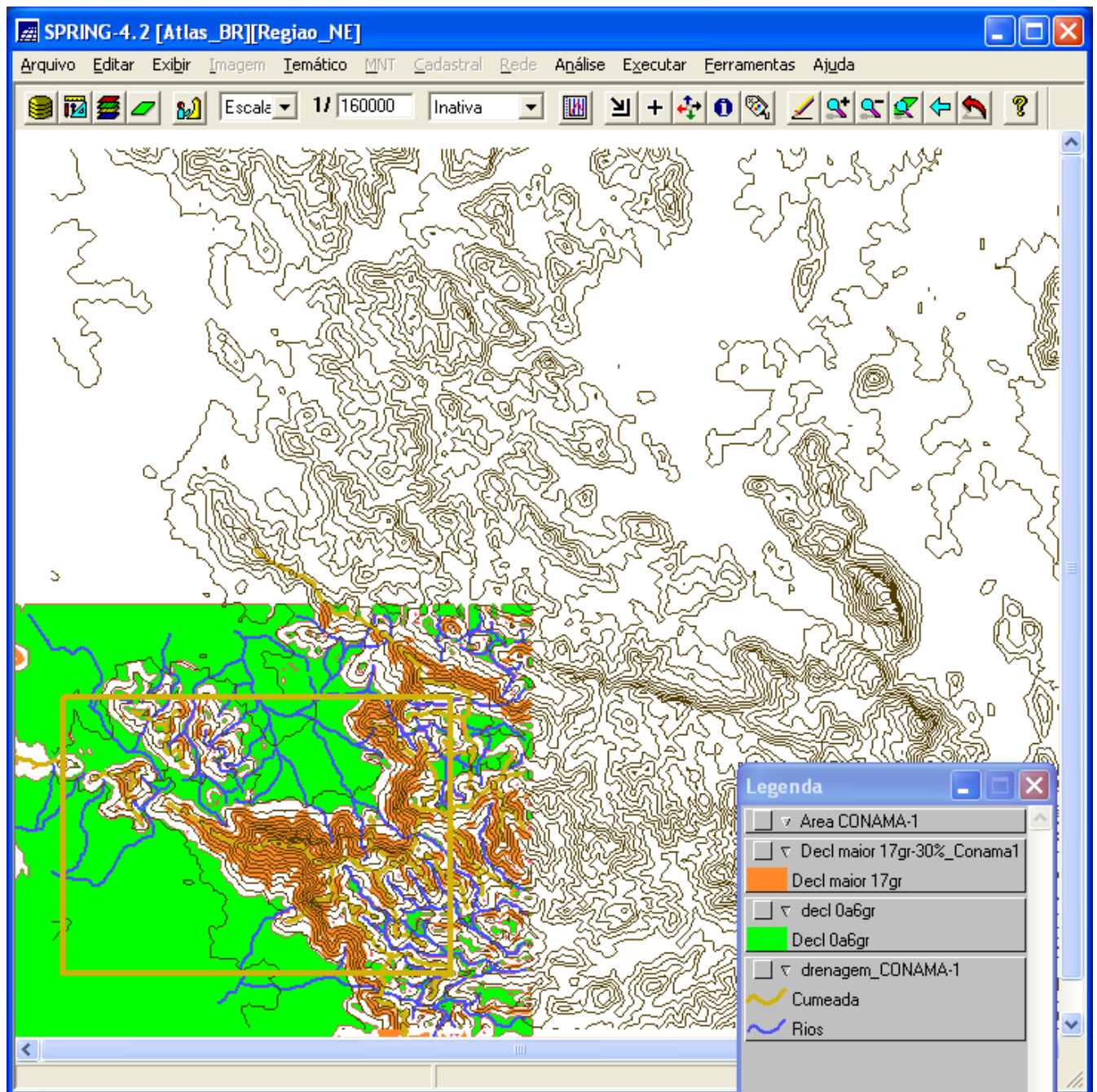


cn 50/50m
mestras

drenagem

linhas de
cumeada

declividades



anterior
ampliada

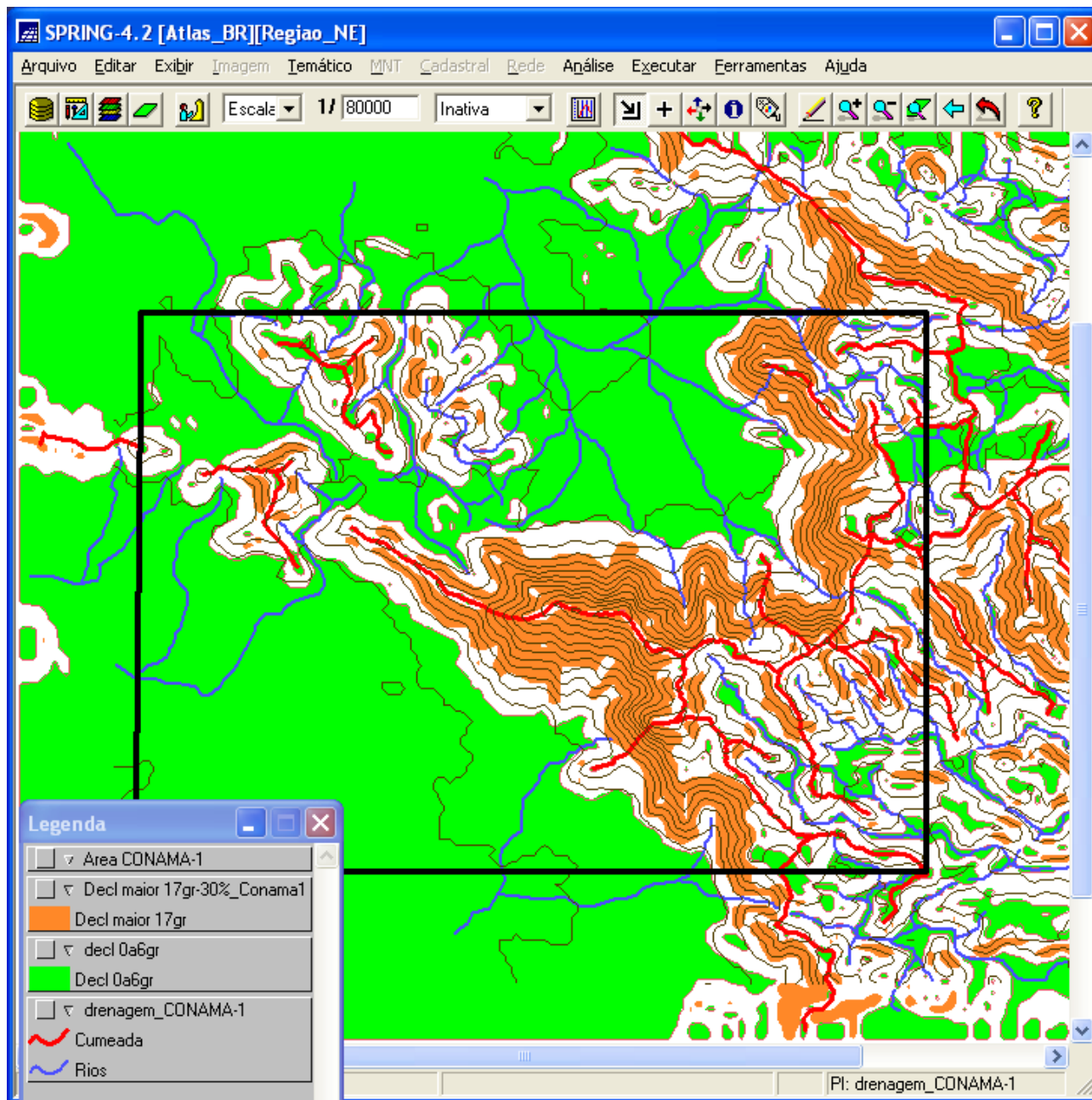
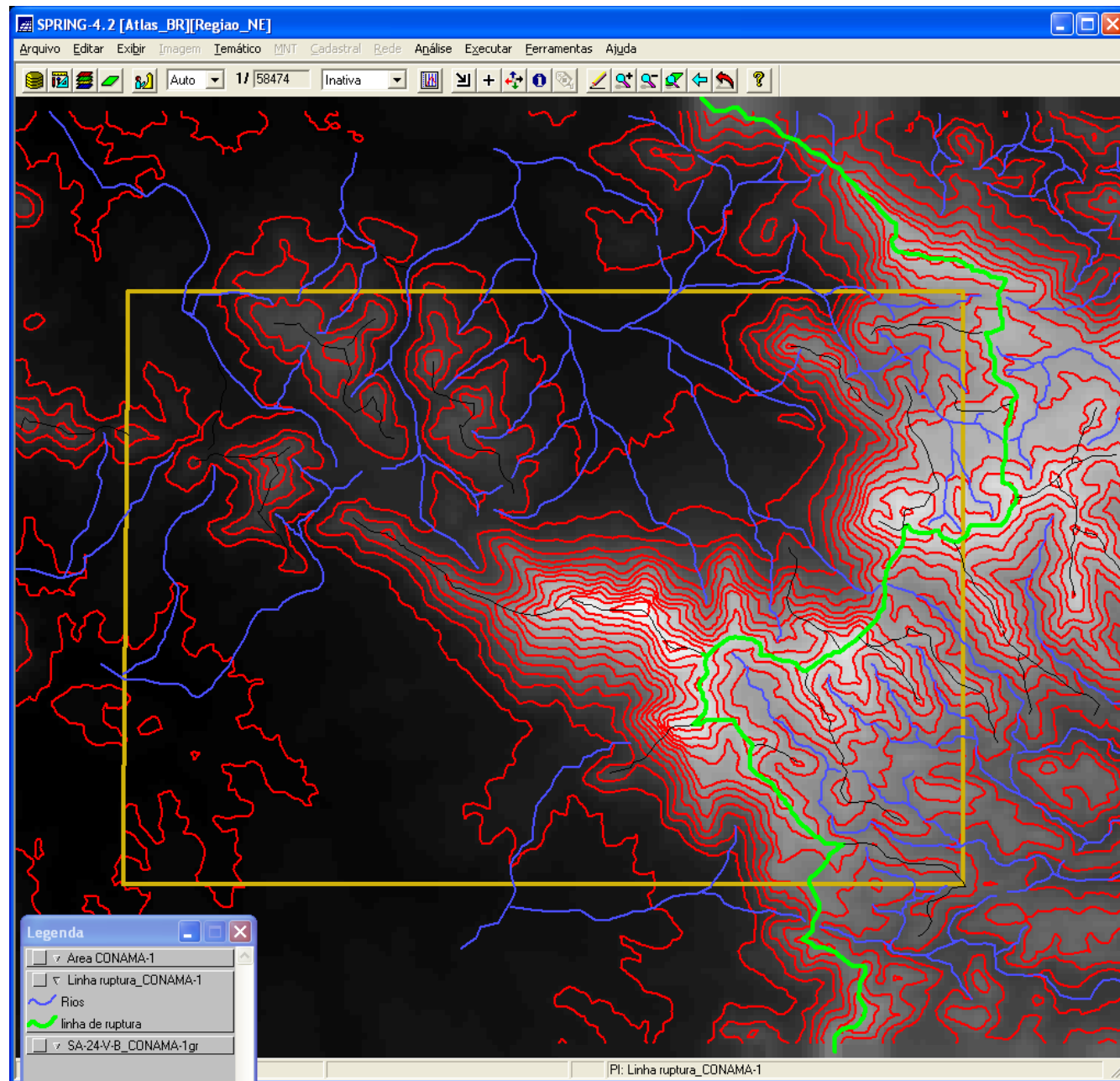


imagem
hypsométrica

análise do
relevo

divisor de
água
da serra



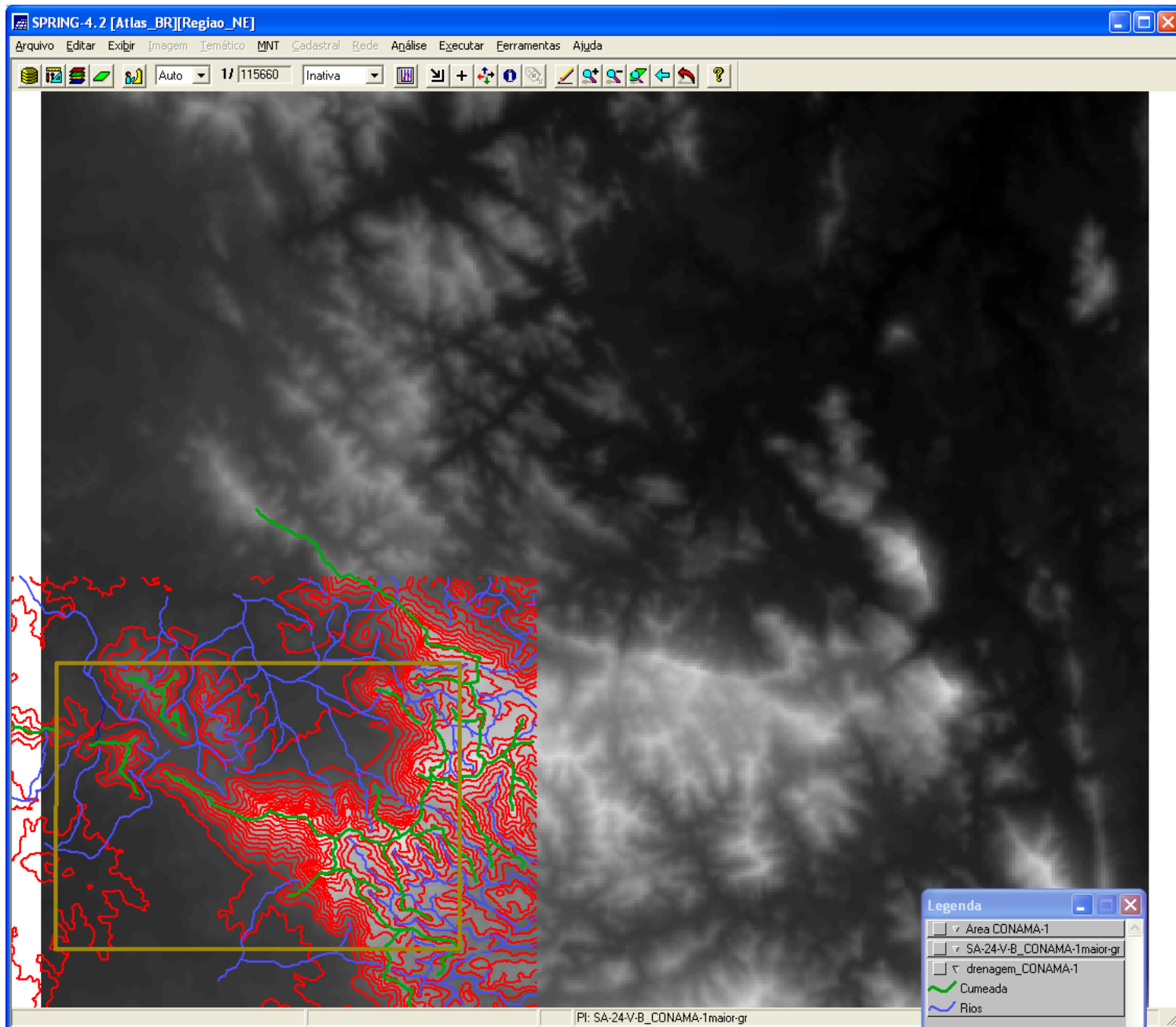


imagem
hypsométrica

análise do
relevo
e de seu
contexto de
inserção

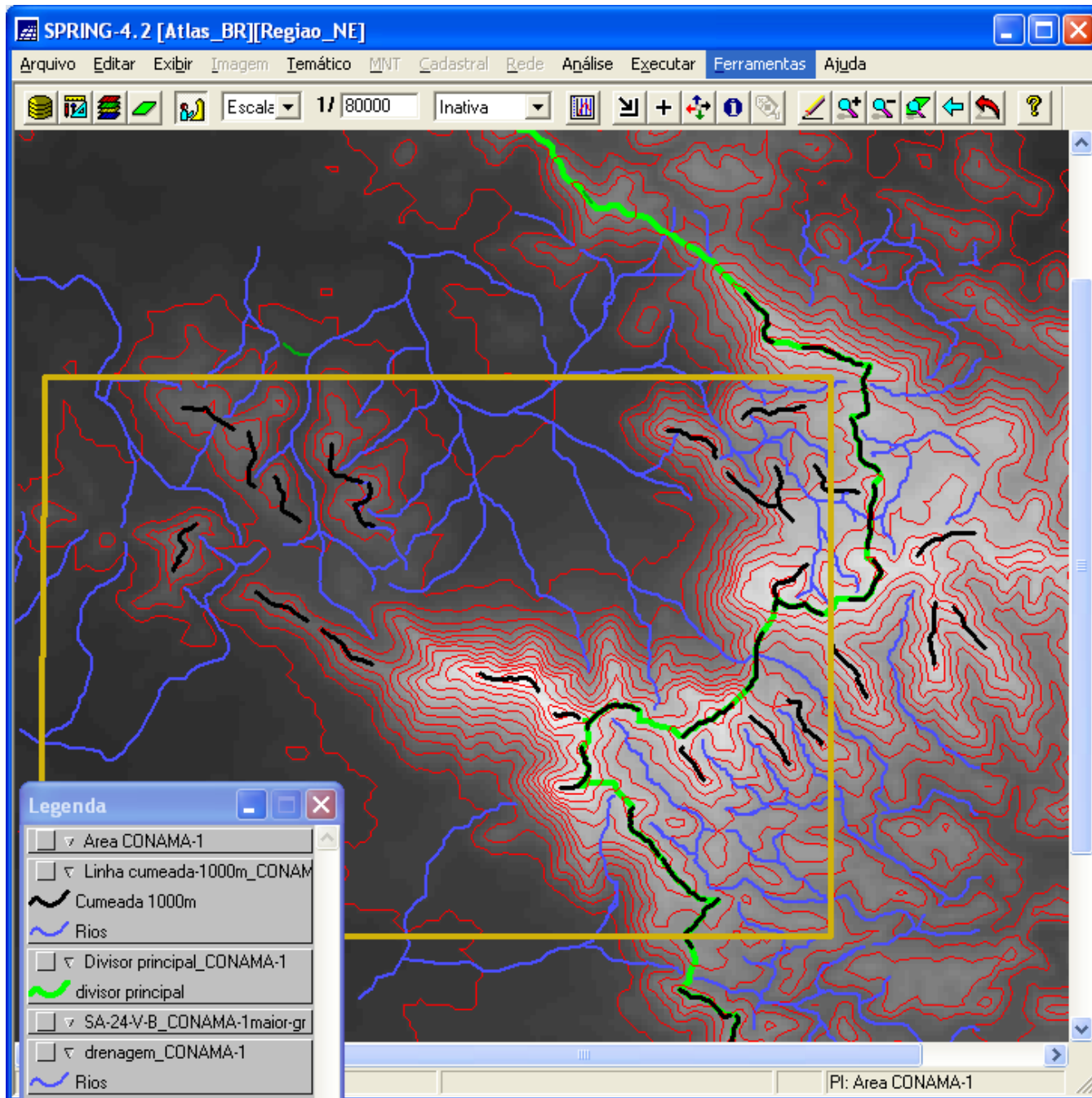


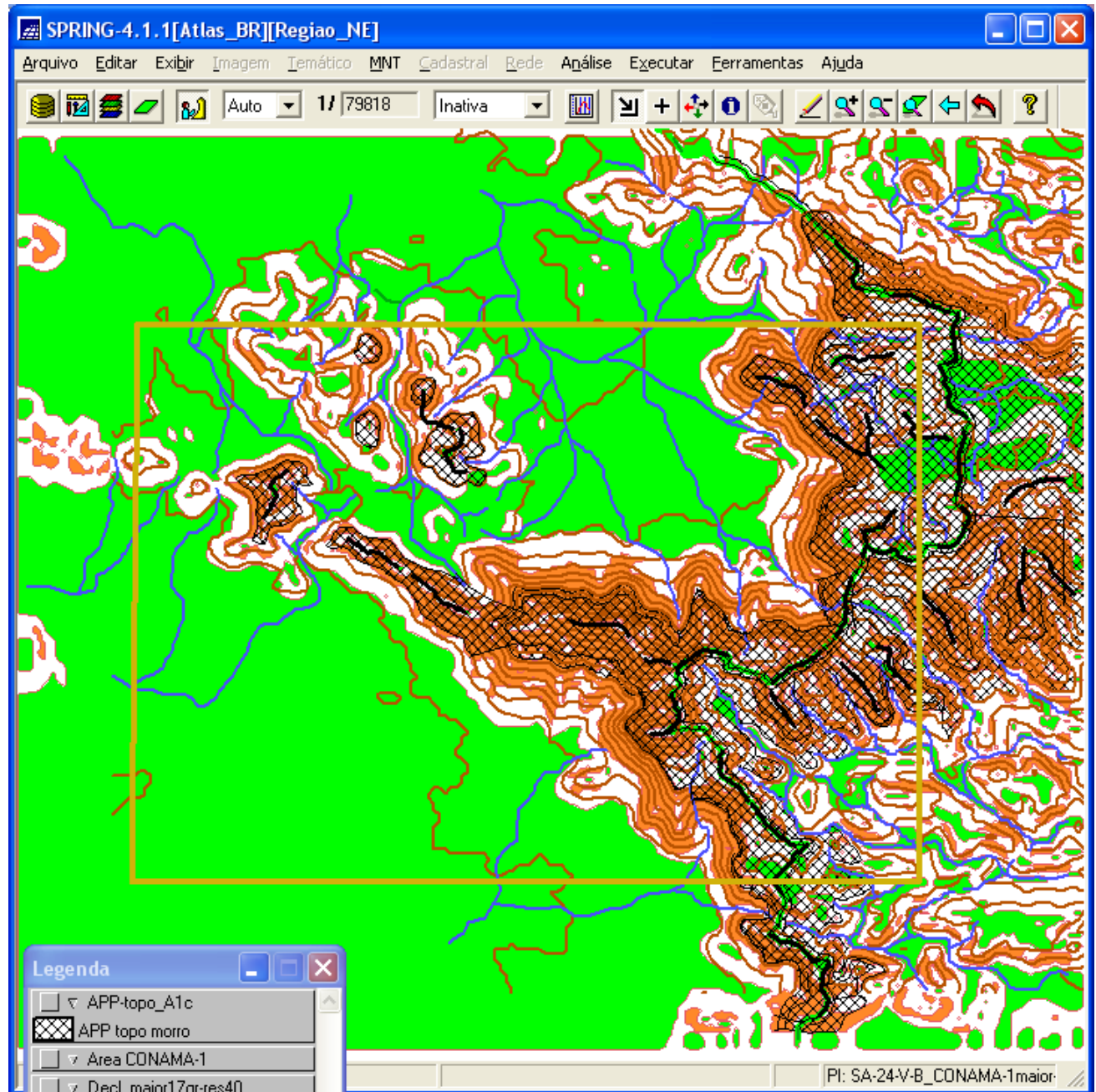
imagem
hypsométrica

análise do
relevo

Segmentos
de 1000
metros
nas linhas
de cumeada

Resultados do
exercício 1:

Delimitação
das áreas de
preservação
permanente
de topo de
morro e
montanha,
segundo a
Resolução
CONAMA
303/02



Idem anterior

